

Light transmitting element



Silver gray



amber



crimson

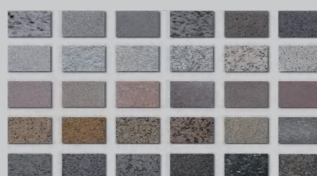
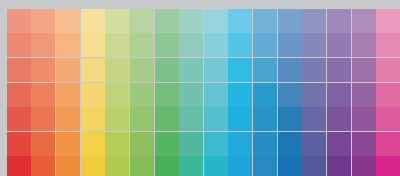
It can replace the traditional building materials decoration panel, perfectly integrate with the building, and provide green energy for the building; The color pattern can be customized according to the needs, with a life of 30 years, and can be applied to the sun visor, the lighting roof, the east, south and west facades of the building.

Product Characteristics

- ◆ Based on the MBB-80 version, the module power can reach 395W, and the module conversion efficiency is 19%.
- ◆ High light transmittance color coated tempered glass + photovoltaic grade PVB+HJT photovoltaic cells + photovoltaic grade PVB+ tempered glass structure makes the components comply with building standards, effectively extend the service life of the components;
- ◆ Compared with traditional PERC batteries, the use of heterojunction batteries in the product has better low-light performance, improve the power output in the morning and evening and cloudy days, and is more suitable for the installation of diverse BIPV products.
- ◆ With the extreme temperature coefficient ($-0.26\%/\text{C}$) compared to traditional crystalline silicon cells, the PV curtain wall products can reduce power generation losses in high temperature environments and ensure more power output:
- ◆ Extremely low photoinduced attenuation (LID) and potentially-induced attenuation (PID) improve component reliability and longevity.

Color card

- ◆ Colors and patterns can be customized

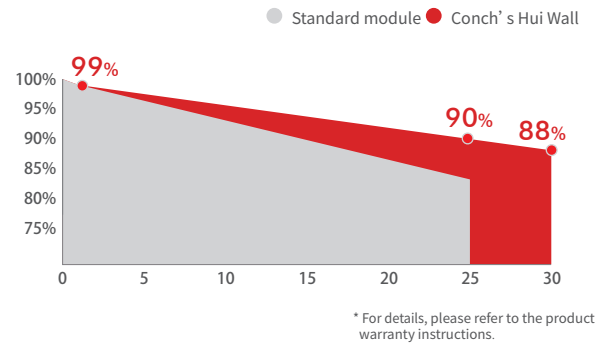
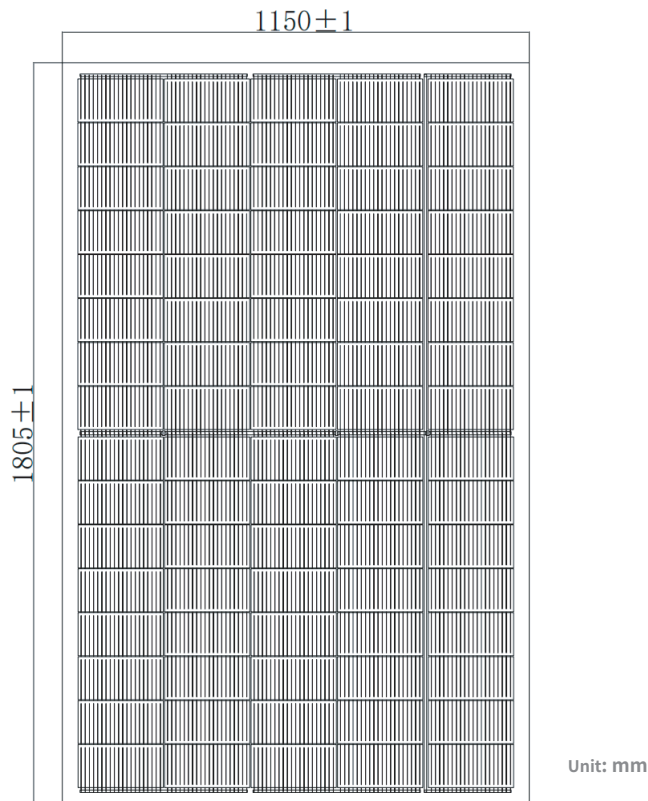


Company official website

Hangzhou Weltrus New Energy Technology Co., Ltd.
Add : Block D, Ocean International Center, 333 Yuanjian Street, Hangzhou, Zhejiang, China.
Tel : +86 571 8838 9554
E-mail : sales@weltrus.com
Website : www.weltrus.com

Hui Wall · PV Curtain Wall Module (180-400W)

80 half pieces | Double-glass non-transparent heterojunction half-piece module



Mechanical parameters

Cell type	Single-crystal heterojunction 210×105mm
Cell arrangement	80 (40×2)
Module size	1805×1150×14.4 mm
Module weight	67.5 kg
Junction box	Protection grade IP67/IP68
Output cable	4mm ² , L: 1100 mm (customized) / UV protection
Connector class	MC4 compatible
Frame	-
Sealant	PVB
Front static load (snow pressure)	5400 Pa
Back static load (wind pressure)	2400 Pa
Glass	(F) 6.0mm ultra-white toughened glass (B) 6.0mm toughened glass

Electrical parameter(STC*)

Module type	Light transmitting element	Silver gray	amber	crimson
Maximum power (Pmax)	395W	275W	230W	235W
Module efficiency (%)	19%	13.2%	11.10%	11.3%
Optimum operating voltage (Vmpp)	25.75V	25.44V	24.92V	25.24V
Optimum operating current (Impp)	15.34A	10.81A	9.23A	9.31A
Open-circuit voltage (Voc)	29.94V	29.79V	29.47V	29.61V
Short-circuit current (Isc)	16.27A	11.5A	9.82A	9.89A
Operating temperature range	-40 ~ +85°C			
Maximum system voltage	DC1000V (IEC)			
Maximum rated fuse current	20A			
Power tolerance range	0~+5W			

*STC (standard test condition): irradiance 1000W/m², battery temperature 25 °C, spectrum AM1.5.

Temperature coefficient

Rated operating temperature of battery (NOCT)	44 °C ± 2 °C
Maximum power temperature coefficient (Pmax)	-0.26%/ °C
Temperature coefficient of open-circuit voltage (Voc)	-0.24%/ °C
Temperature coefficient of short-circuit current (Isc)	0.04%/ °C

Safety level & warranty

Safety level	Class II
Product warranty	10-year product materials and processes
Power warranty	30-year linear power output*

* The attenuation is 1% in the first year, not more than 0.375% annually from the next year, and not less than 88% in the 30th year.

The specifications and key features described in this data sheet may deviate slightly. Conch BIPV reserves the right to make any adjustment to the information herein at any time without further notice. Please access the latest version of the specification at any time. The specification shall be formally incorporated into the binding contract signed by both parties and shall apply to all transactions relating to the sale and purchase of the products described herein.

Packaging information

Capacity of each case: 26 pieces